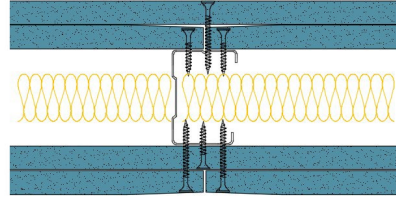


50-K-59(25) - SPEEDLINE System Data Sheet - Version V1 (24-10-23)

SPEEDLINE 50mm 'C' Stud Partition @600mm Ctrs,
with 2x Knauf 12.5mm Soundshield Plus each side,
25mm APR



System Performance Breakdown

Fire Resistance:

BS476 Part 22:1987:

Test Ref & Date or Applied Ref & Report:

Max Height:

Thickness:

Duty Grade: BS 5234: Part 2:1992:

Sound Insulation:

60/60 Minutes (Integrity/Insulation).

BRE 208596 - BRE Report P102396-1011B

Refer to Speedline Specification Clause

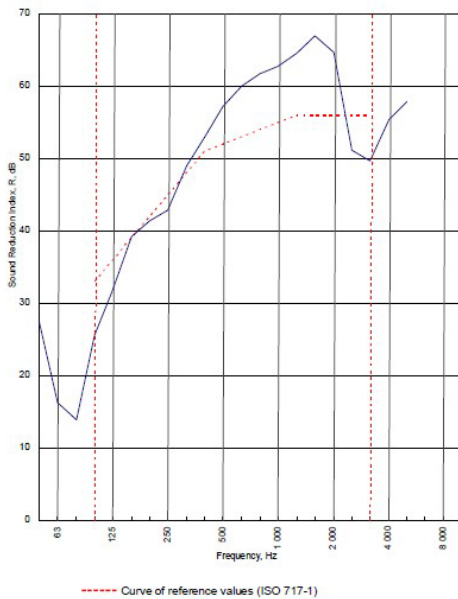
102 mm. (At Base Track, Excluding Finishes)

Severe - Annexes A-F

52 R_w dB, Date Tested or Assessed Against - 17/06/2011

Test Code:
H17386GA
Test Date:
17/06/2011

Freq. Hz	R dB
50	27.3
63	16.2
80	13.8
100	25.5
125	31.8
160	39.2
200	41.3
250	42.9
315	49.0
400	53.0
500	57.2
630	60.0
800	61.7
1 000	62.7
1 250	64.6
1 600	67.0
2 000	64.7
2 500	51.1
3 150	49.7
4 000	55.4
5 000	57.9
6 300	
8 000	
10 000	



Rating according to BS EN ISO 717-1:1997	R_w (C;Ctr) = 52 (-2;-8) dB		
Evaluation based on laboratory measurement results obtained by an engineering method:	Max dev. 7.5 dB at 100 Hz		
	$C_{50-1150} = -8$ dB	$C_{50-5000} = -7$ dB	$C_{100-5000} = -1$ dB
	$C_{2, 50-3 150} = -19$ dB	$C_{4, 50-5 000} = -19$ dB	$C_{4, 100-5 000} = -8$ dB

TESTED AT ONE OF THE UKAS ACCREDITED LABORATORIES BELOW

B.T.C
(H-Ref on Graph)

B.R.E

AIRO

S.R.L

Customer: Metsec plc Hepsec Division

BTC 17411A: Page 9 of 11



SPEEDLINE Drywall Systems, Adsetts House, 16 Europa View, Sheffield Business Park, Sheffield, S9 1XH.

Tel: 0114 231 8030.

Email: enquiries@speedlinedrywall.co.uk

(As per the requirements set out in ISO/IEC 17025:2017 regarding test data the results stated have been carried out by voestalpine Metsec plc as part of the contract to supply Speedline Metal Sections to SIG plc)